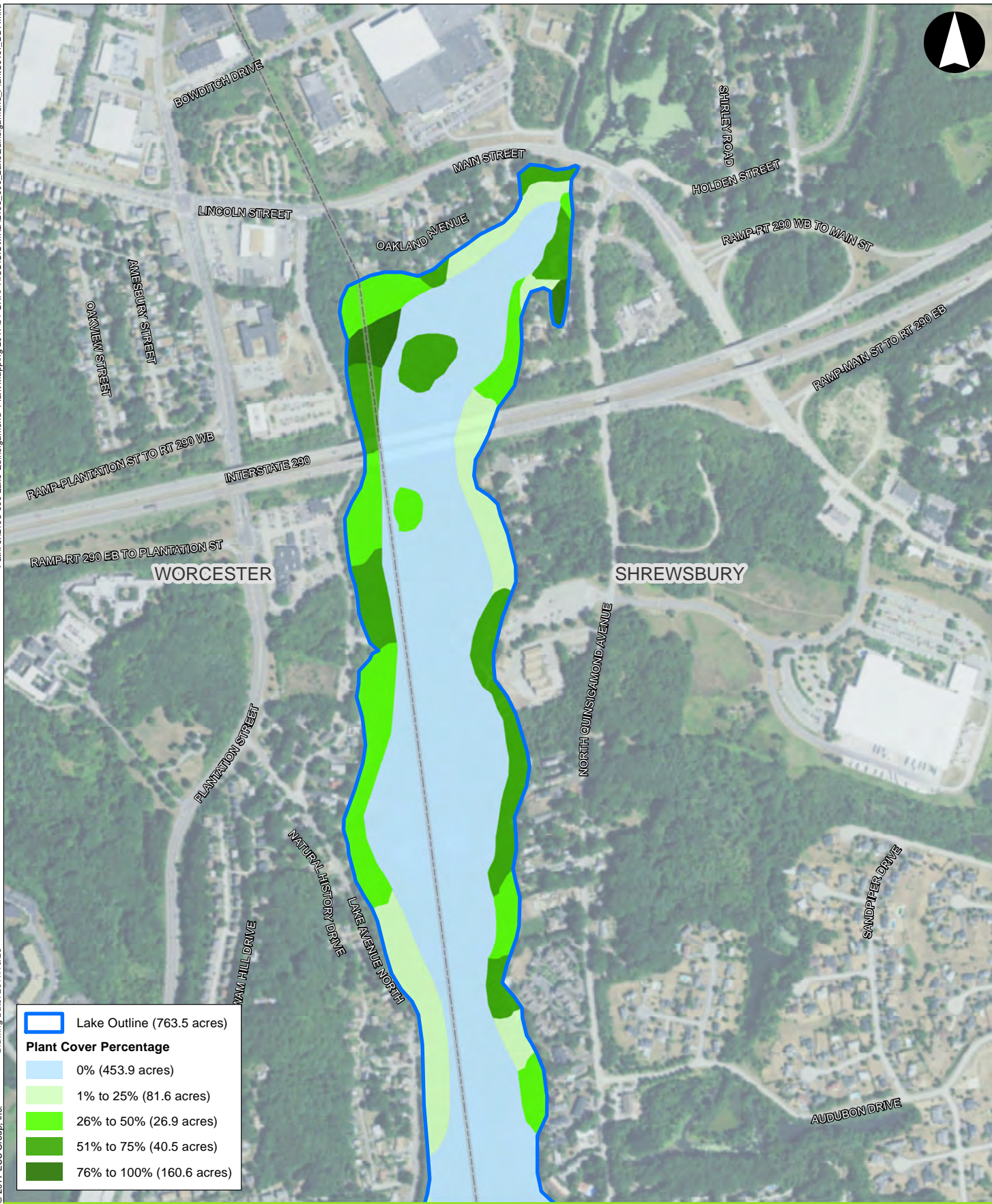


Path: J:\193-000 Lake Quinsigamond- Plant Mapping 2017\04 GRAPHICS\GIS\MXD\193_000_LakeQuinsigamond_PlantCover_DDP.mxd
 Drawing Date: 2017/10/25
 © 2017 ESS Group, Inc.

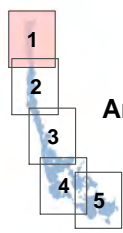


	Lake Outline (763.5 acres)
Plant Cover Percentage	
	0% (453.9 acres)
	1% to 25% (81.6 acres)
	26% to 50% (26.9 acres)
	51% to 75% (40.5 acres)
	76% to 100% (160.6 acres)



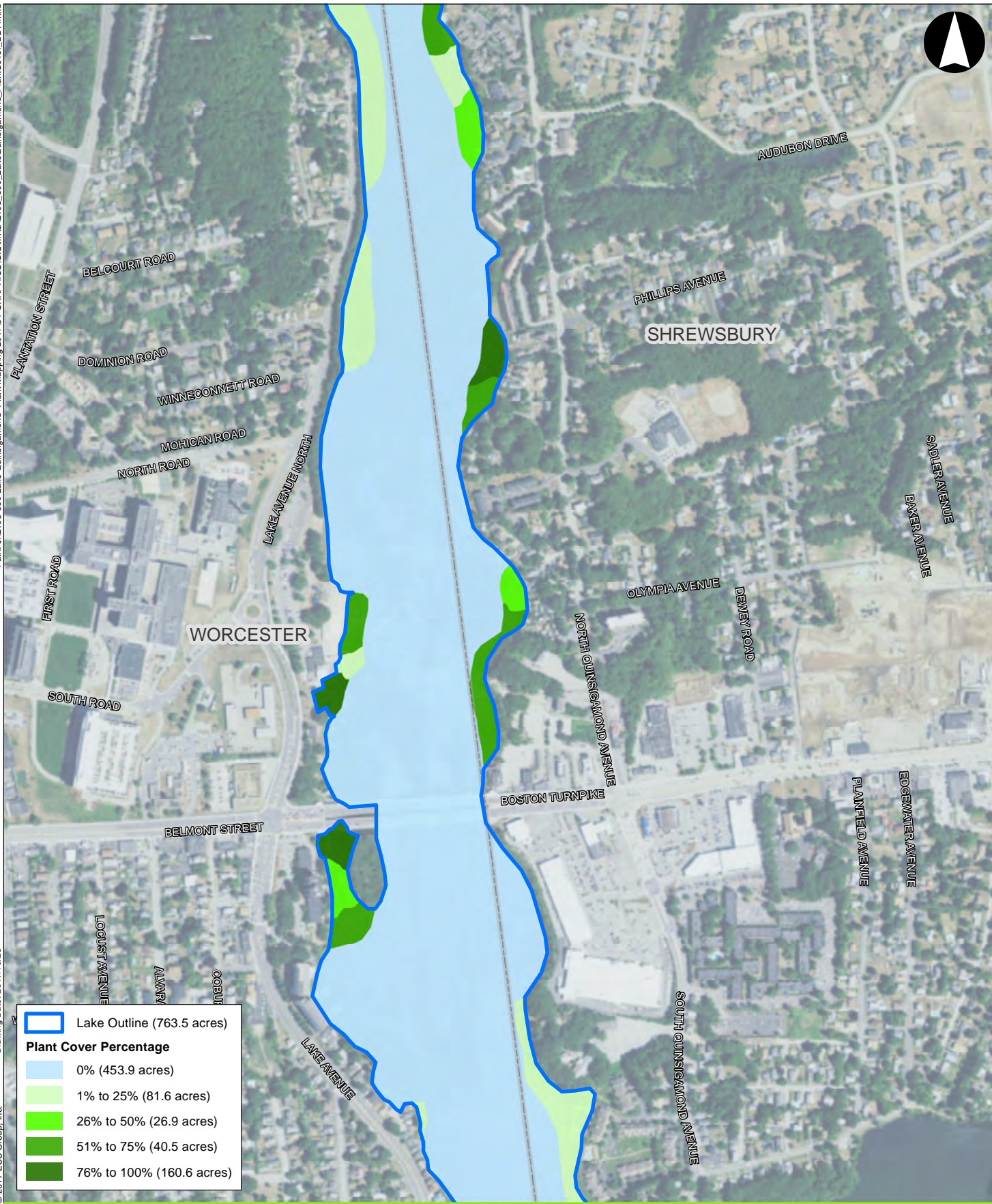
Lake Quinsigamond
 Worcester/Shrewsbury, Massachusetts

1 inch = 700 feet
 Source: 1) ESRI, World Imagery, 2017
 2) ESS, Field Survey, October 2017



Area of Detail

Plant Cover
 October 6 - 11, 2017

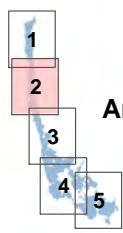


	Lake Outline (763.5 acres)
Plant Cover Percentage	
	0% (453.9 acres)
	1% to 25% (81.6 acres)
	26% to 50% (26.9 acres)
	51% to 75% (40.5 acres)
	76% to 100% (160.6 acres)



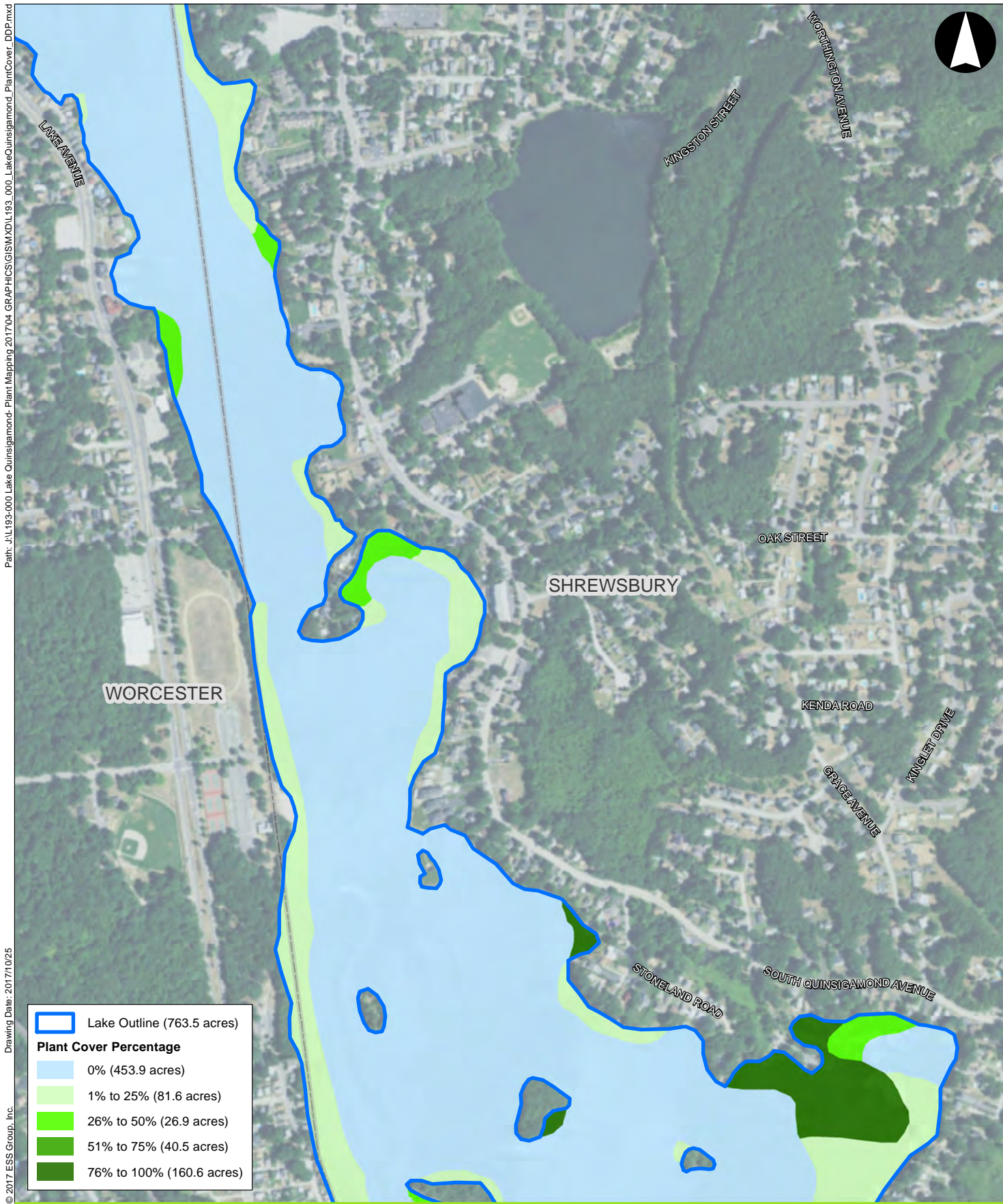
Lake Quinsigamond
Worcester/Shrewsbury, Massachusetts

1 inch = 700 feet
Source: 1) ESRI, World Imagery, 2017
2) ESS, Field Survey, October 2017

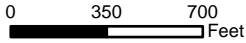


Area of Detail

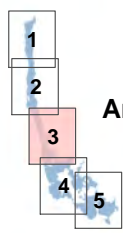
Plant Cover
October 6 - 11, 2017



Lake Quinsigamond
Worcester/Shrewsbury, Massachusetts

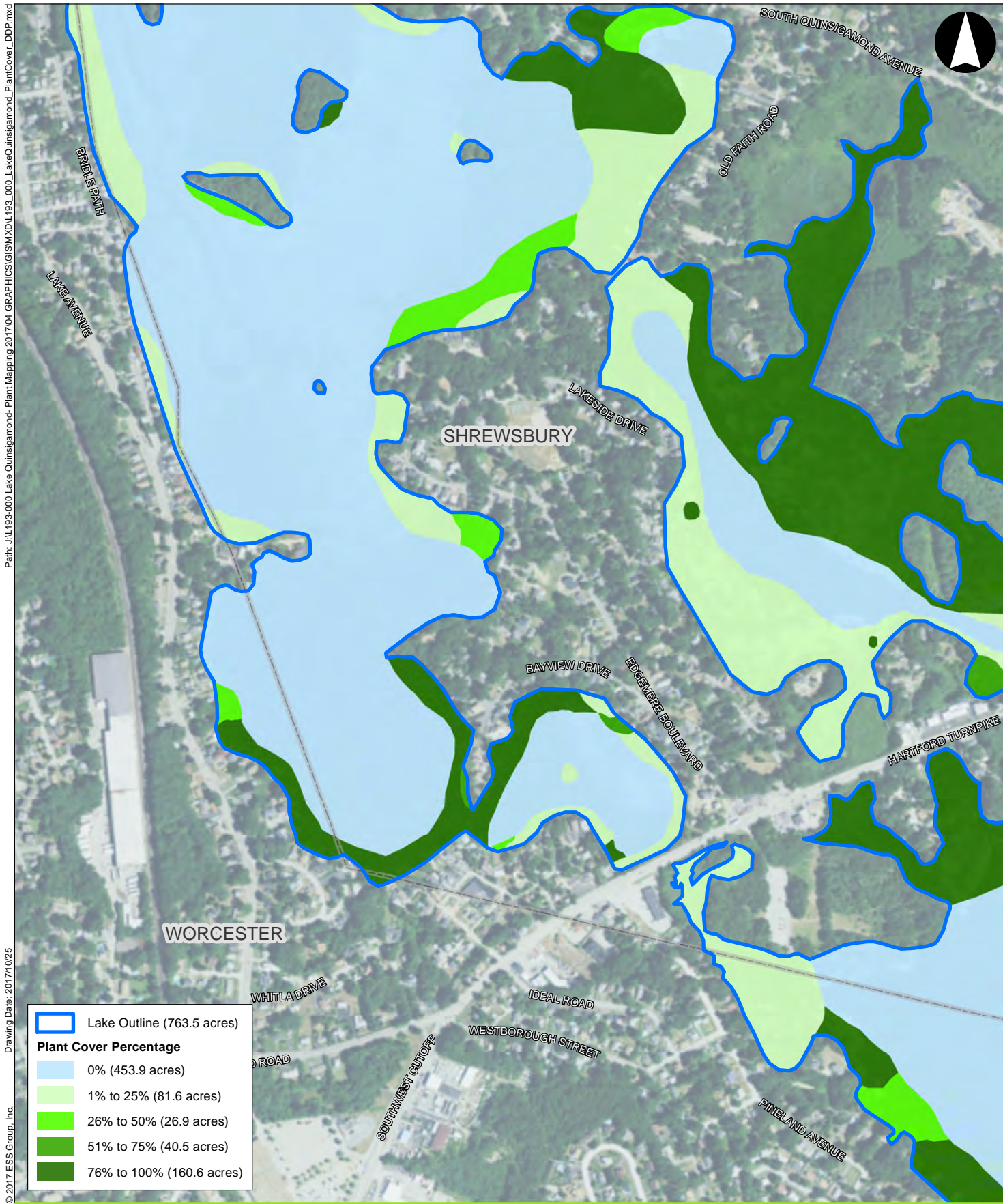


1 inch = 700 feet
Source: 1) ESRI, World Imagery, 2017
2) ESS, Field Survey, October 2017



Area of Detail

Plant Cover
October 6 - 11, 2017



Path: J:\193-000 Lake Quinsigamond- Plant Mapping 2017\04 GRAPHICS\GIS\MXD\193_000_LakeQuinsigamond_PlantCover_DDP.mxd

Drawing Date: 2017/10/25

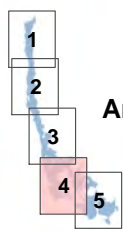
© 2017 ESS Group, Inc.

	Lake Outline (763.5 acres)
Plant Cover Percentage	
	0% (453.9 acres)
	1% to 25% (81.6 acres)
	26% to 50% (26.9 acres)
	51% to 75% (40.5 acres)
	76% to 100% (160.6 acres)



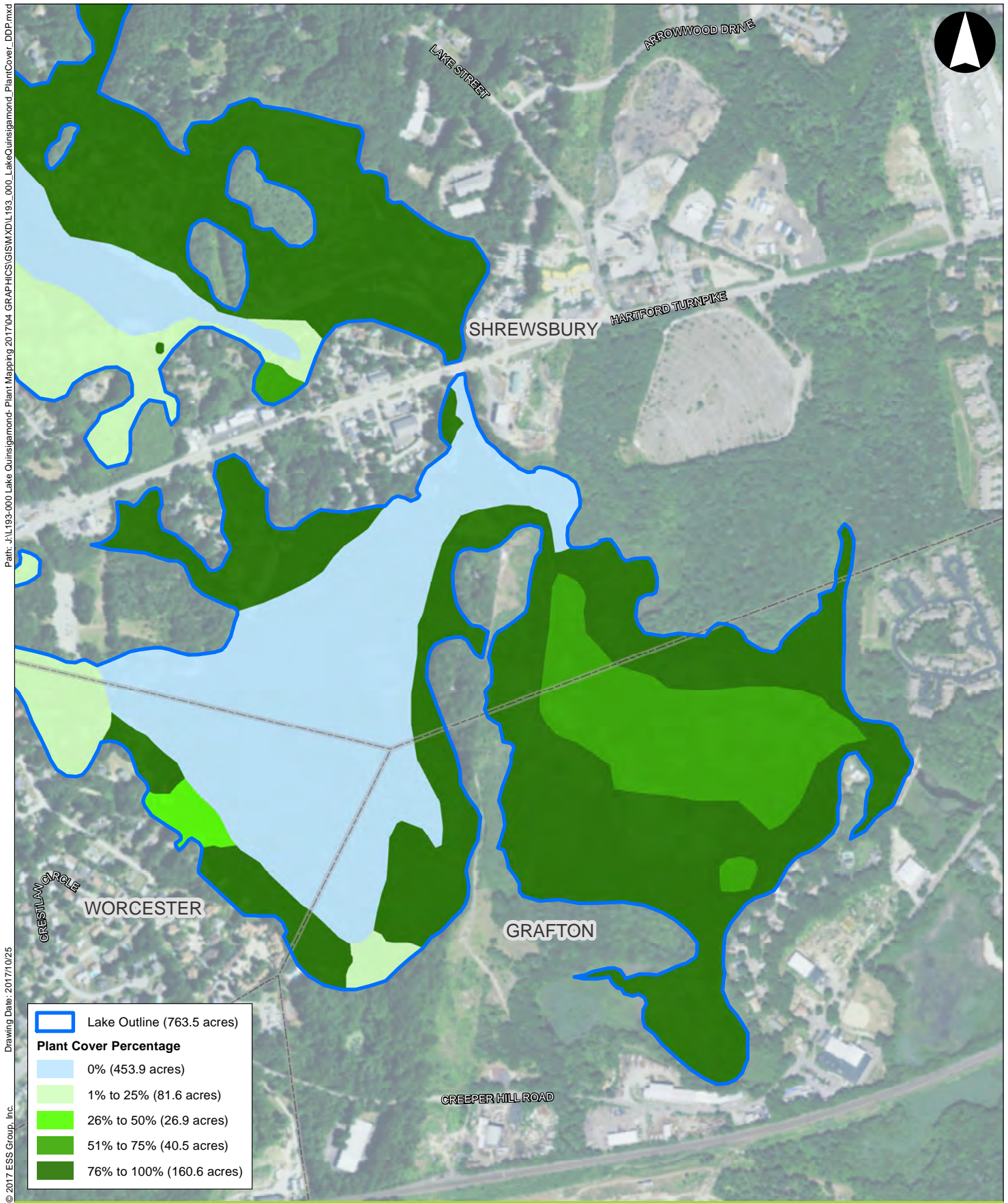
Lake Quinsigamond
Worcester/Shrewsbury, Massachusetts

1 inch = 700 feet
Source: 1) ESRI, World Imagery, 2017
2) ESS, Field Survey, October 2017



Area of Detail

Plant Cover
October 6 - 11, 2017



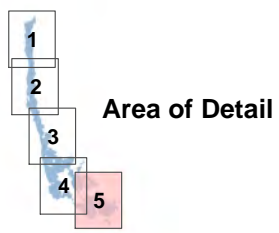
Path: J:\193-000 Lake Quinsigamond- Plant Mapping 2017\04 GRAPHICS\GIS\MXD\193_000_LakeQuinsigamond_PlantCover_DDP.mxd
 Drawing Date: 2017/10/25
 © 2017 ESS Group, Inc.

	Lake Outline (763.5 acres)
Plant Cover Percentage	
	0% (453.9 acres)
	1% to 25% (81.6 acres)
	26% to 50% (26.9 acres)
	51% to 75% (40.5 acres)
	76% to 100% (160.6 acres)



Lake Quinsigamond
 Worcester/Shrewsbury, Massachusetts

1 inch = 700 feet
 Source: 1) ESRI, World Imagery, 2017
 2) ESS, Field Survey, October 2017



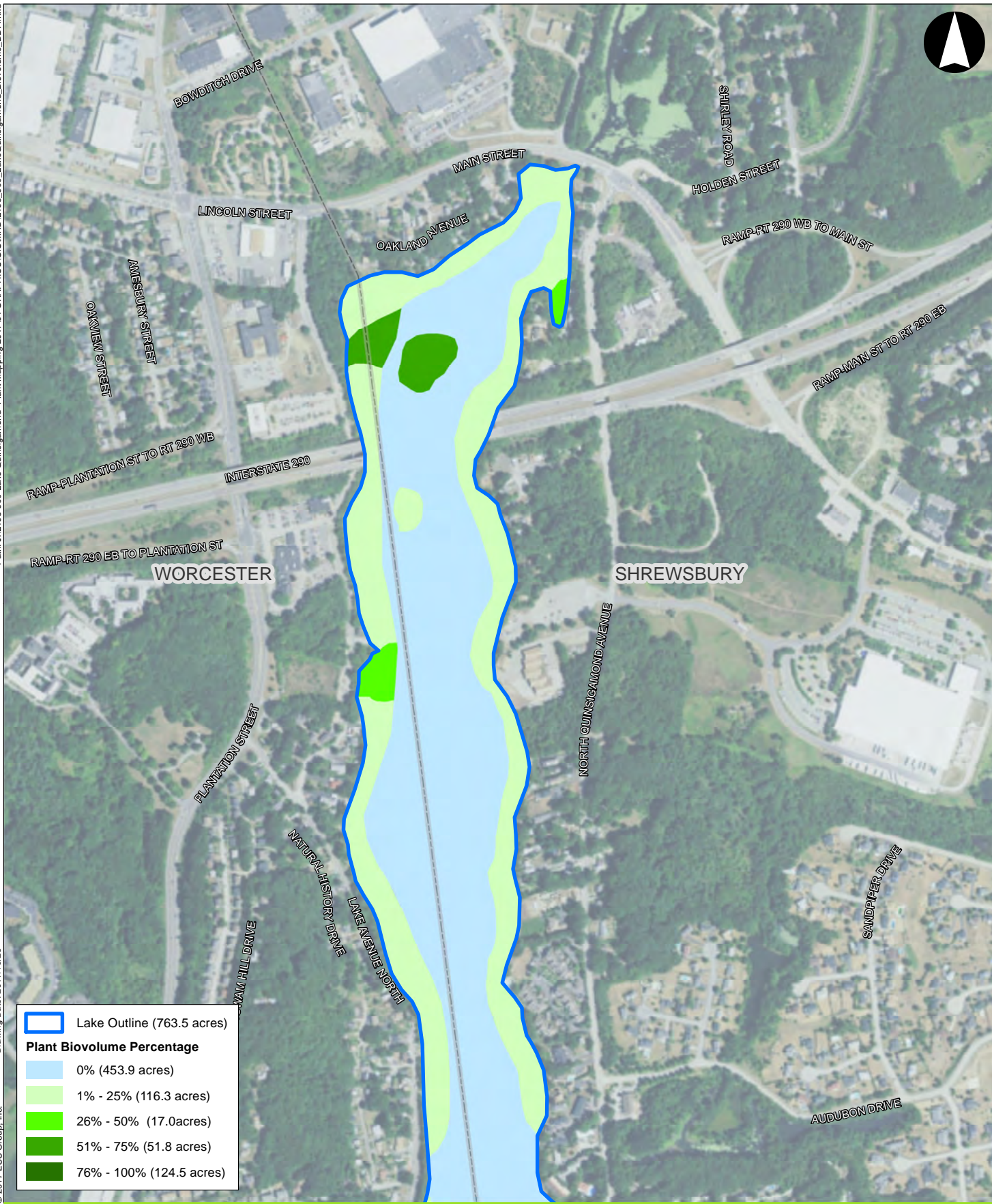
Plant Cover
 October 6 - 11, 2017

Figure 1
 Page 5 of 5

Path: J:\L193-000 Lake Quinsigamond- Plant Mapping 2017\04 GRAPHICS\GIS\MXD\L193_000_LakeQuinsigamond_Biovolume_DDP.mxd

Drawing Date: 2017/10/25

© 2017 ESS Group, Inc.

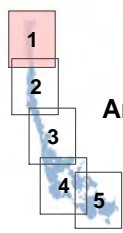


	Lake Outline (763.5 acres)
Plant Biovolume Percentage	
	0% (453.9 acres)
	1% - 25% (116.3 acres)
	26% - 50% (17.0 acres)
	51% - 75% (51.8 acres)
	76% - 100% (124.5 acres)



Lake Quinsigamond
Worcester/Shrewsbury, Massachusetts

1 inch = 700 feet
Source: 1) ESRI, World Imagery, 2017
2) ESS, Field Survey, October 2017



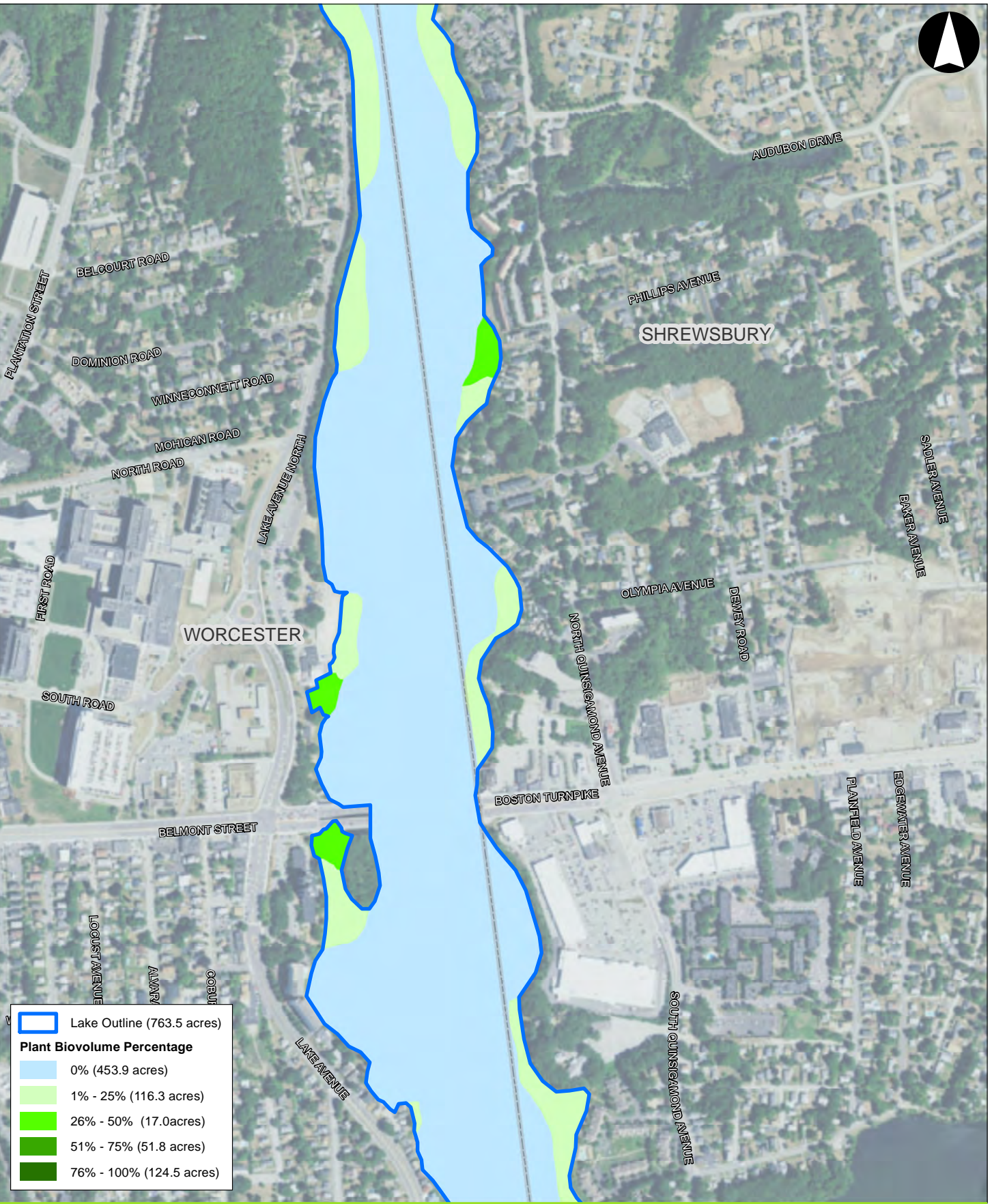
Area of Detail

Plant Biovolume
October 6 - 11, 2017

Path: J:\L193-000 Lake Quinsigamond- Plant Mapping 2017\04 GRAPHICS\GIS\MXD\193_000_LakeQuinsigamond_Biovolume_DDF.mxd

Drawing Date: 2017/10/25

© 2017 ESS Group, Inc.

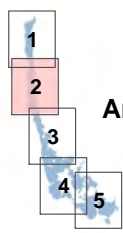
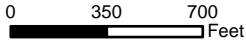


	Lake Outline (763.5 acres)
Plant Biovolume Percentage	
	0% (453.9 acres)
	1% - 25% (116.3 acres)
	26% - 50% (17.0 acres)
	51% - 75% (51.8 acres)
	76% - 100% (124.5 acres)



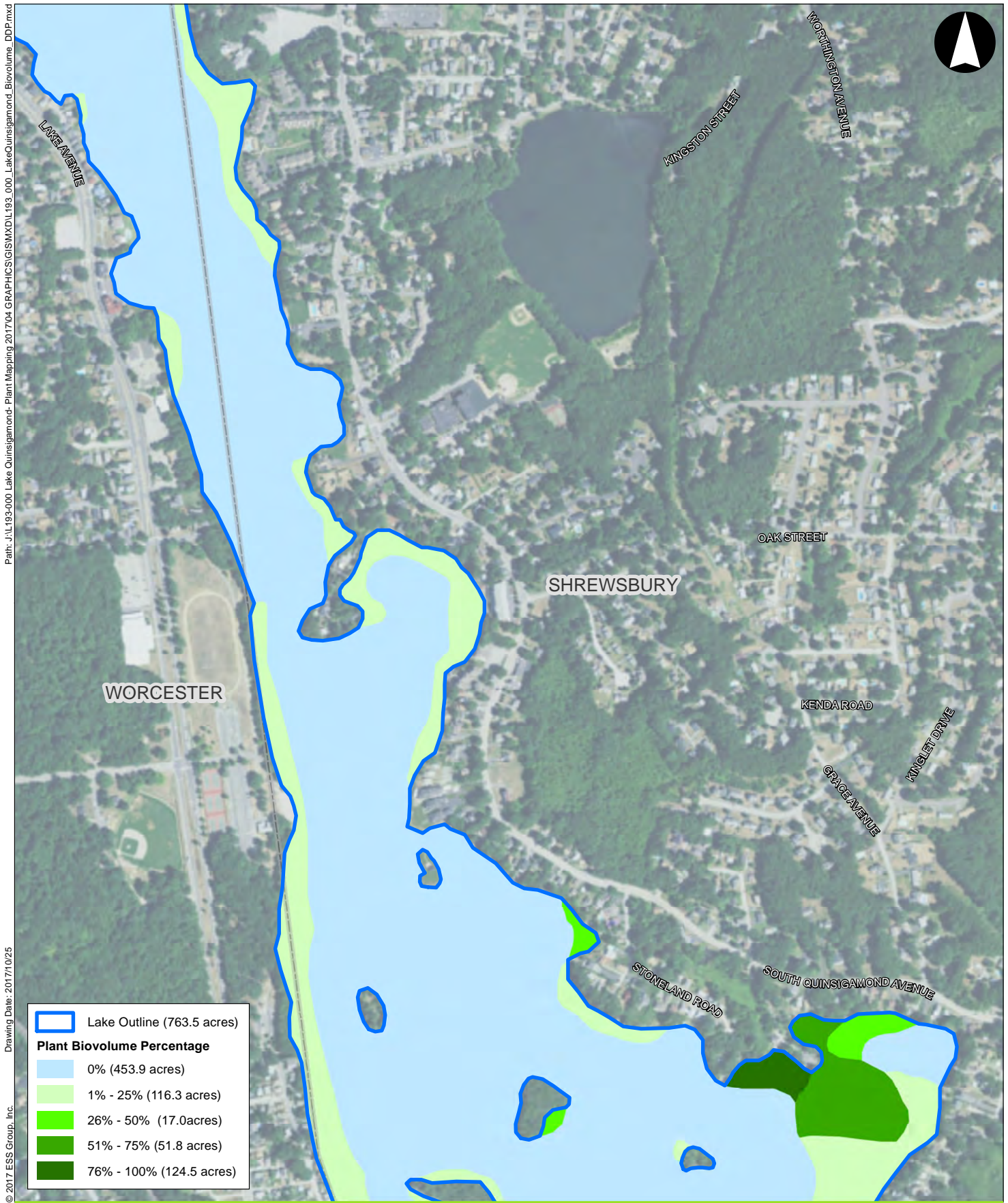
Lake Quinsigamond
Worcester/Shrewsbury, Massachusetts

1 inch = 700 feet
Source: 1) ESRI, World Imagery, 2017
2) ESS, Field Survey, October 2017



Area of Detail

Plant Biovolume
October 6 - 11, 2017



Path: J:\L193-000 Lake Quinsigamond- Plant Mapping 2017\04 GRAPHICS\GIS\MXD\L193_000_LakeQuinsigamond_Biovolume_DDP.mxd

Drawing Date: 2017/10/25

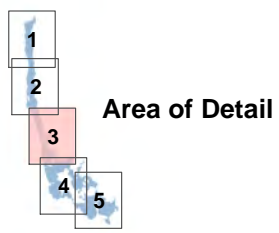
© 2017 ESS Group, Inc.

	Lake Outline (763.5 acres)
Plant Biovolume Percentage	
	0% (453.9 acres)
	1% - 25% (116.3 acres)
	26% - 50% (17.0 acres)
	51% - 75% (51.8 acres)
	76% - 100% (124.5 acres)

0 350 700 Feet

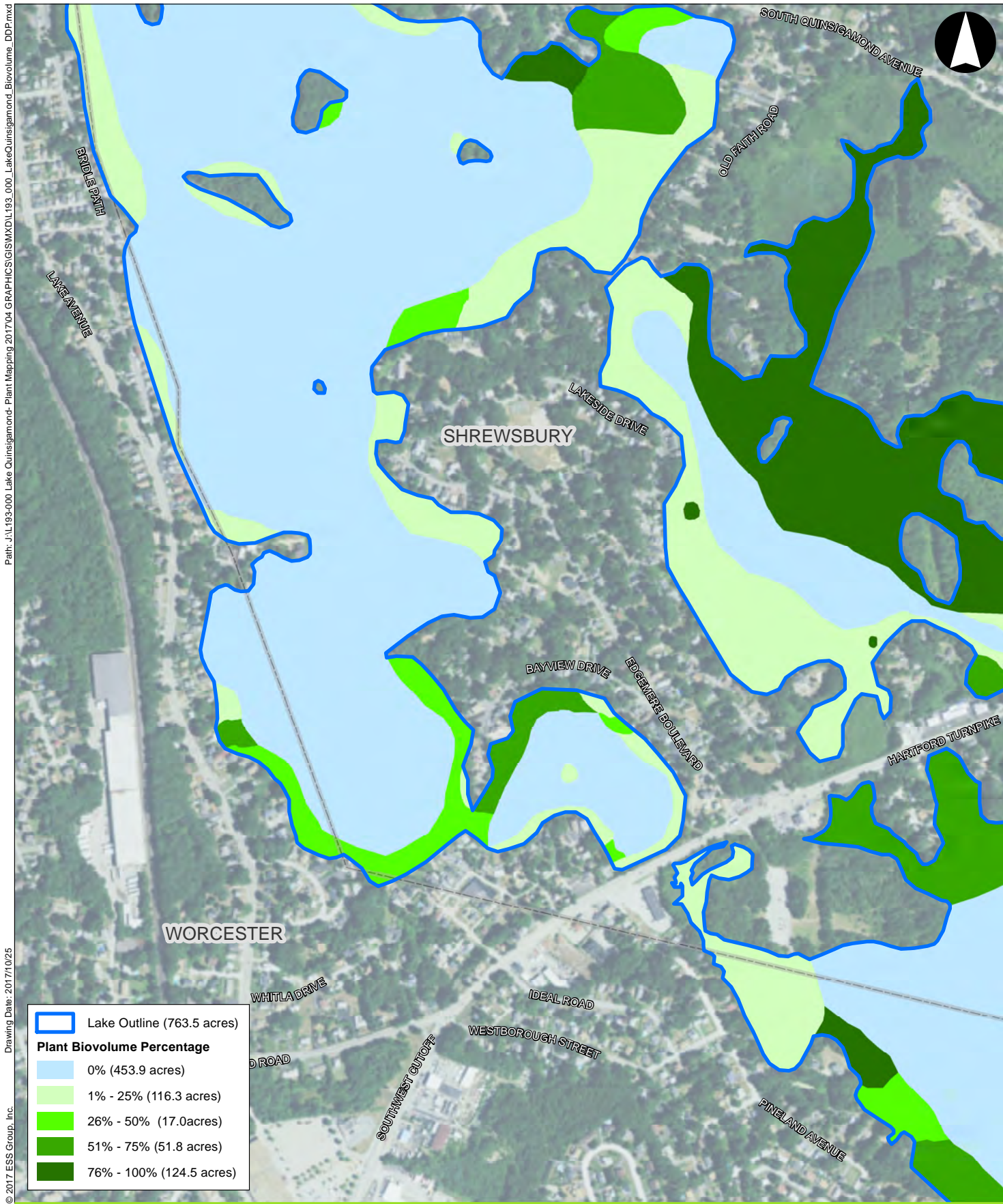
Lake Quinsigamond
Worcester/Shrewsbury, Massachusetts

1 inch = 700 feet
Source: 1) ESRI, World Imagery, 2017
2) ESS, Field Survey, October 2017



Plant Biovolume
October 6 - 11, 2017

Figure 2
Page 3 of 5



Path: J:\L193-000 Lake Quinsigamond- Plant Mapping 2017\04 GRAPHICS\GIS\MXD\L193_000_LakeQuinsigamond_Biovolume_DDP.mxd

Drawing Date: 2017/10/25

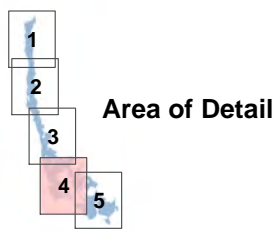
© 2017 ESS Group, Inc.

	Lake Outline (763.5 acres)
Plant Biovolume Percentage	
	0% (453.9 acres)
	1% - 25% (116.3 acres)
	26% - 50% (17.0 acres)
	51% - 75% (51.8 acres)
	76% - 100% (124.5 acres)

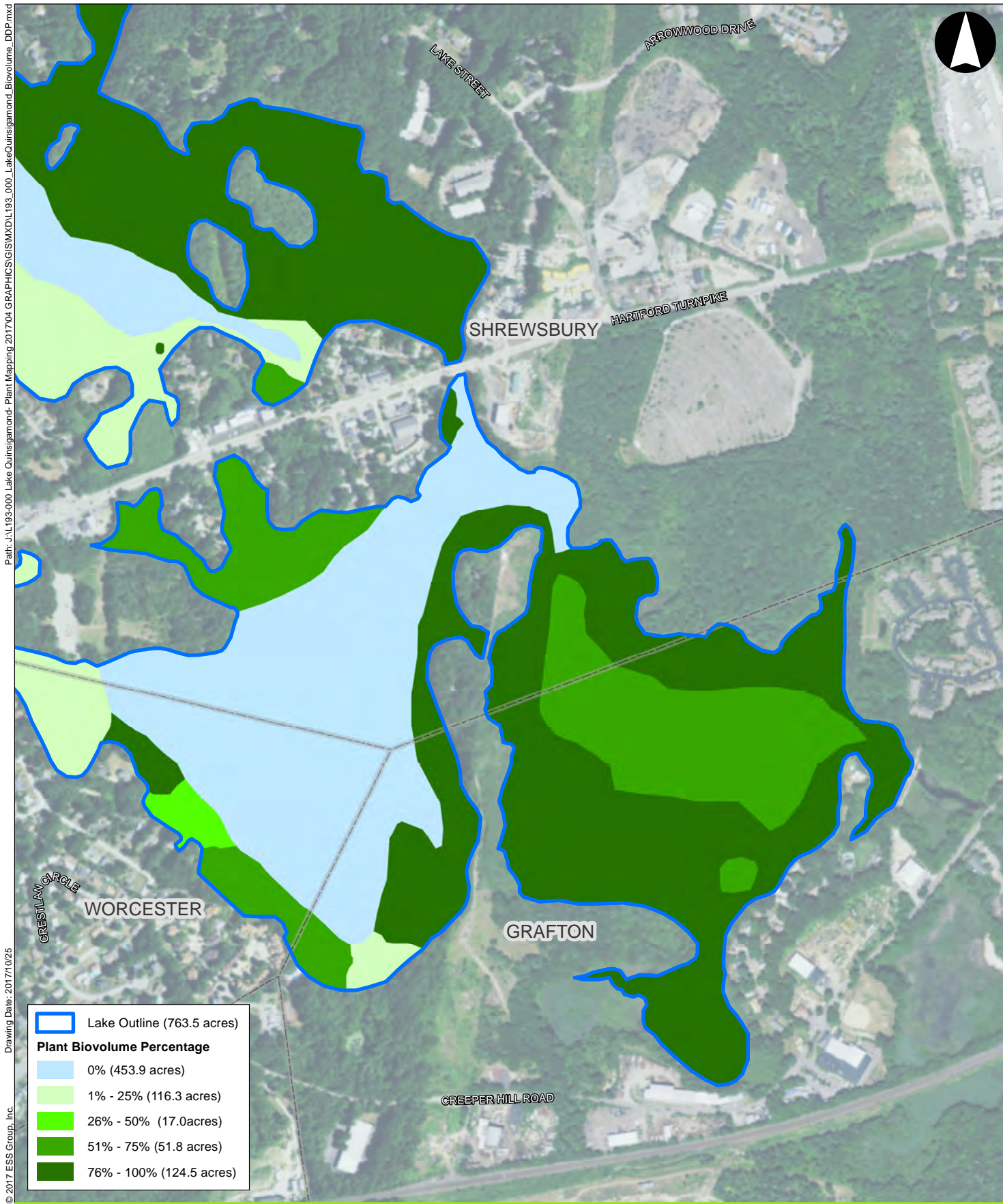
0 350 700 Feet

Lake Quinsigamond
Worcester/Shrewsbury, Massachusetts

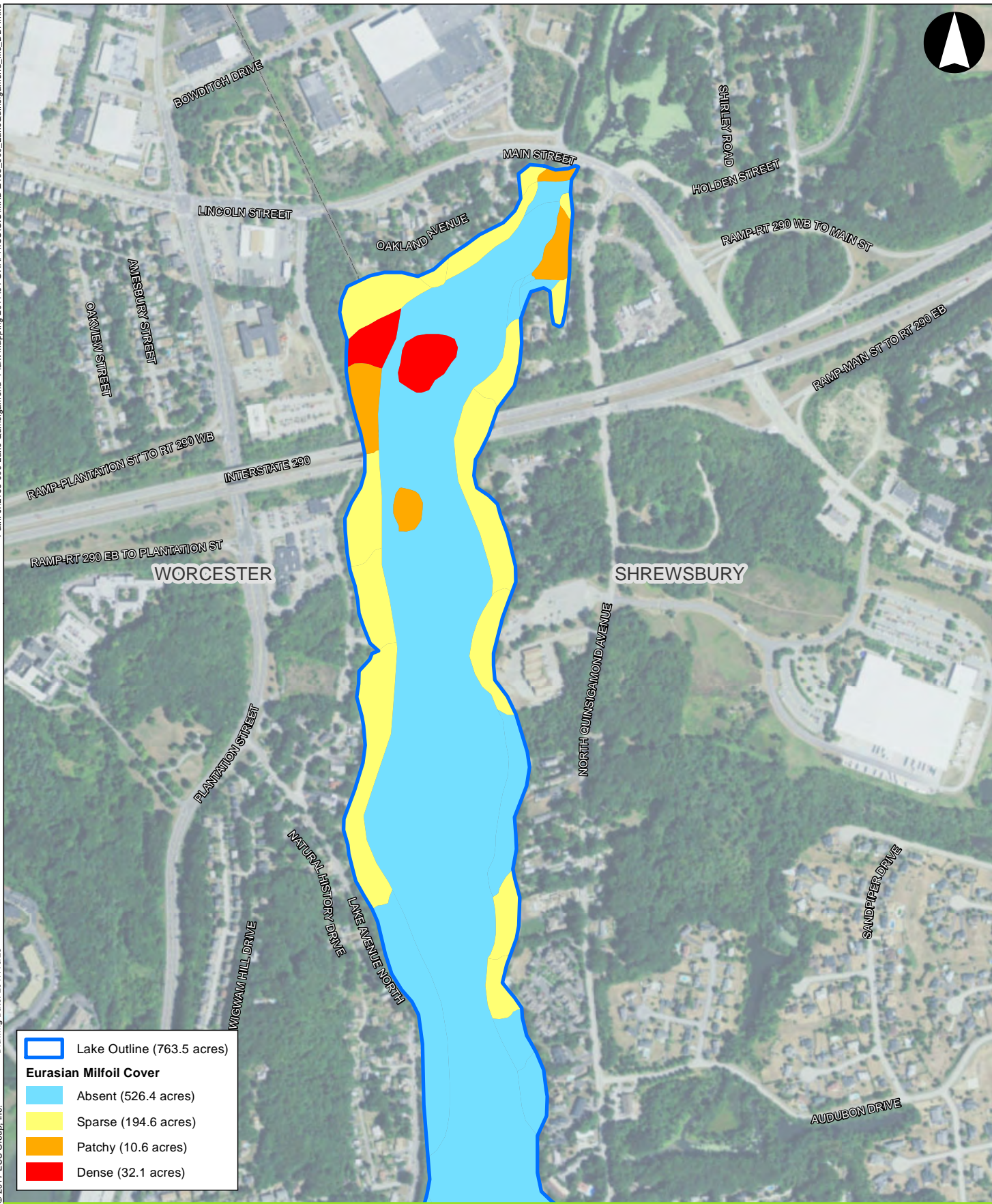
1 inch = 700 feet
Source: 1) ESRI, World Imagery, 2017
2) ESS, Field Survey, October 2017



Plant Biovolume
October 6 - 11, 2017



Path: J:\183-000 Lake Quinsigamond- Plant Mapping 201704 GRAPHICS\GIS\MXD\L183_000_LakeQuinsigamond_MS_DDP.mxd
 Drawing Date: 2017/10/25
 © 2017 ESS Group, Inc.

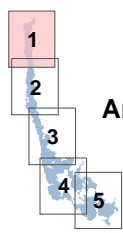


	Lake Outline (763.5 acres)
Eurasian Milfoil Cover	
	Absent (526.4 acres)
	Sparse (194.6 acres)
	Patchy (10.6 acres)
	Dense (32.1 acres)



Lake Quinsigamond
 Worcester/Shrewsbury, Massachusetts

1 inch = 700 feet
 Source: 1) ESRI, World Imagery, 2017
 2) ESS, Field Survey, October 2017

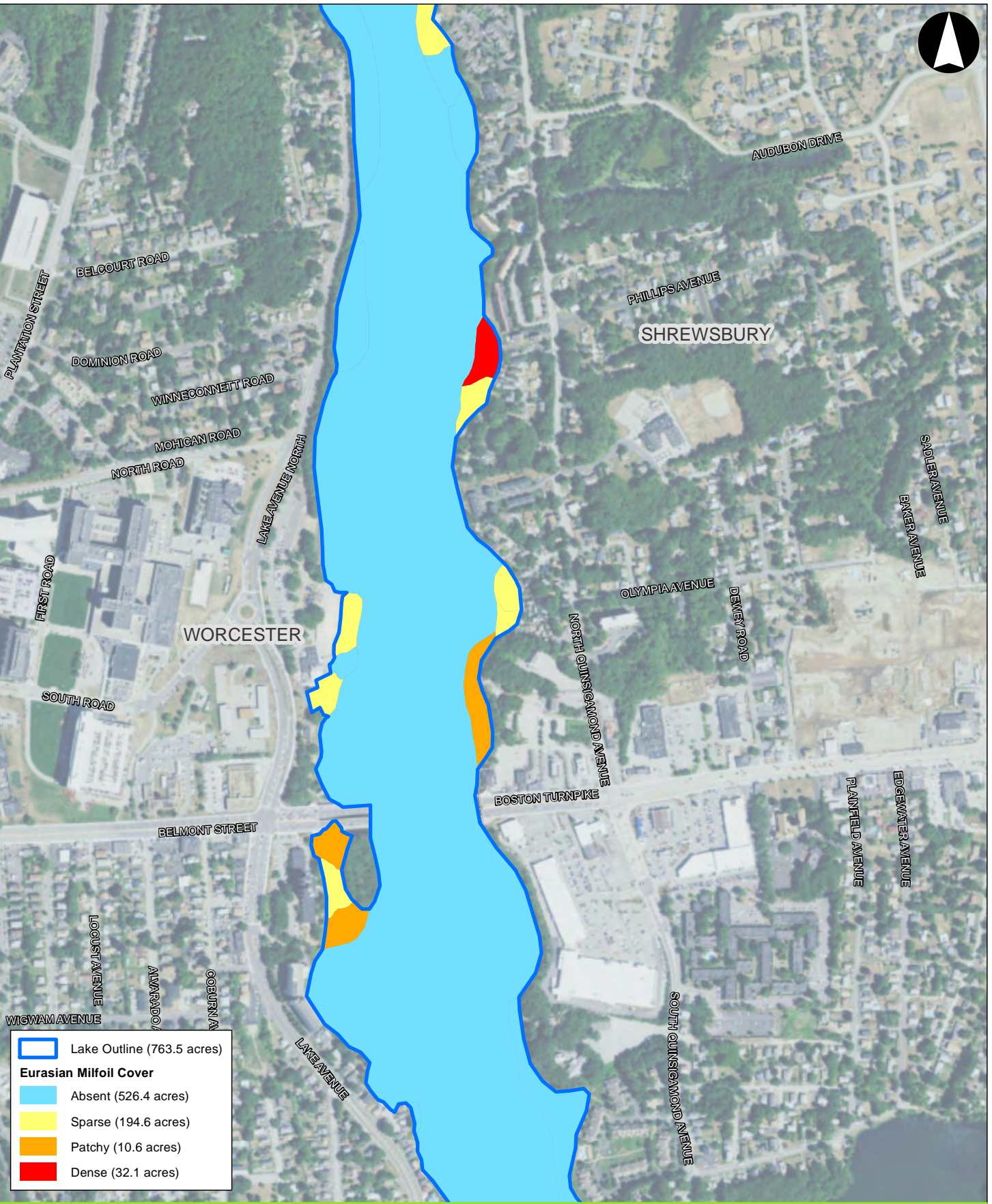


Area of Detail

Eurasian Milfoil Cover
 October 6 - 11, 2017

Figure 3
 Page 1 of 5

Path: J:\193-000 Lake Quinsigamond- Plant Mapping 2017\04 GRAPHICS\GIS\MXD\193_000_LakeQuinsigamond_MS_DDP.mxd
 Drawing Date: 2017/10/25
 © 2017 ESS Group, Inc.

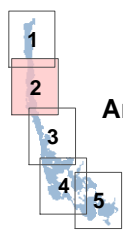


	Lake Outline (763.5 acres)
Eurasian Milfoil Cover	
	Absent (526.4 acres)
	Sparse (194.6 acres)
	Patchy (10.6 acres)
	Dense (32.1 acres)



Lake Quinsigamond
 Worcester/Shrewsbury, Massachusetts

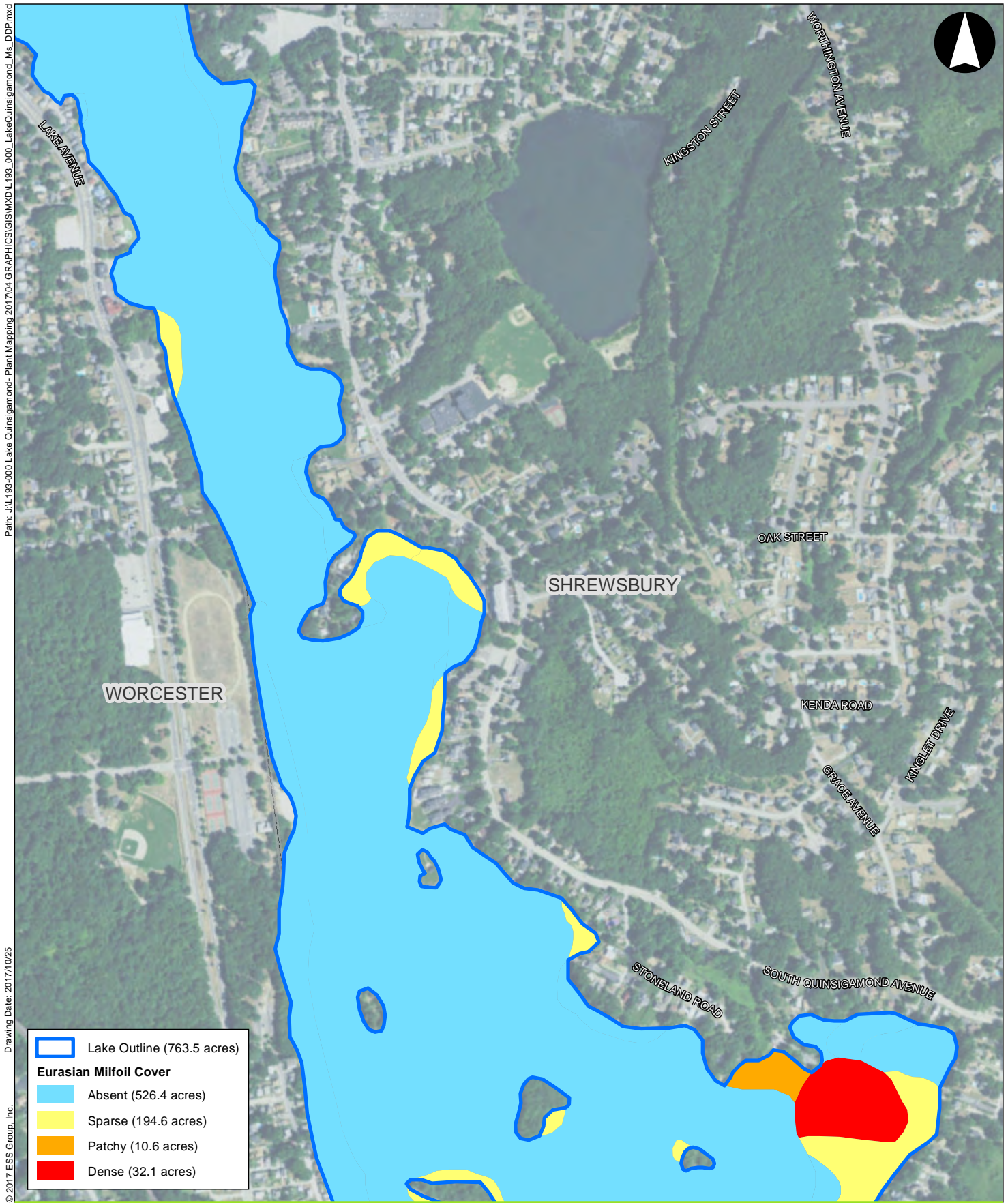
1 inch = 700 feet
 Source: 1) ESRI, World Imagery, 2017
 2) ESS, Field Survey, October 2017



Area of Detail

Eurasian Milfoil Cover
 October 6 - 11, 2017

Figure 3
 Page 2 of 5



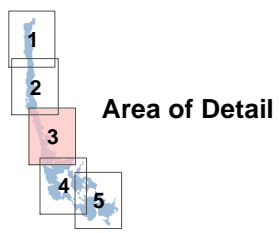
Path: J:\193-000 Lake Quinsigamond- Plant Mapping 2017\04 GRAPHICS\GIS\MXD\193_000_LakeQuinsigamond_Ms_DDP.mxd
 Drawing Date: 2017/10/25
 © 2017 ESS Group, Inc.

	Lake Outline (763.5 acres)
Eurasian Milfoil Cover	
	Absent (526.4 acres)
	Sparse (194.6 acres)
	Patchy (10.6 acres)
	Dense (32.1 acres)

0 350 700 Feet

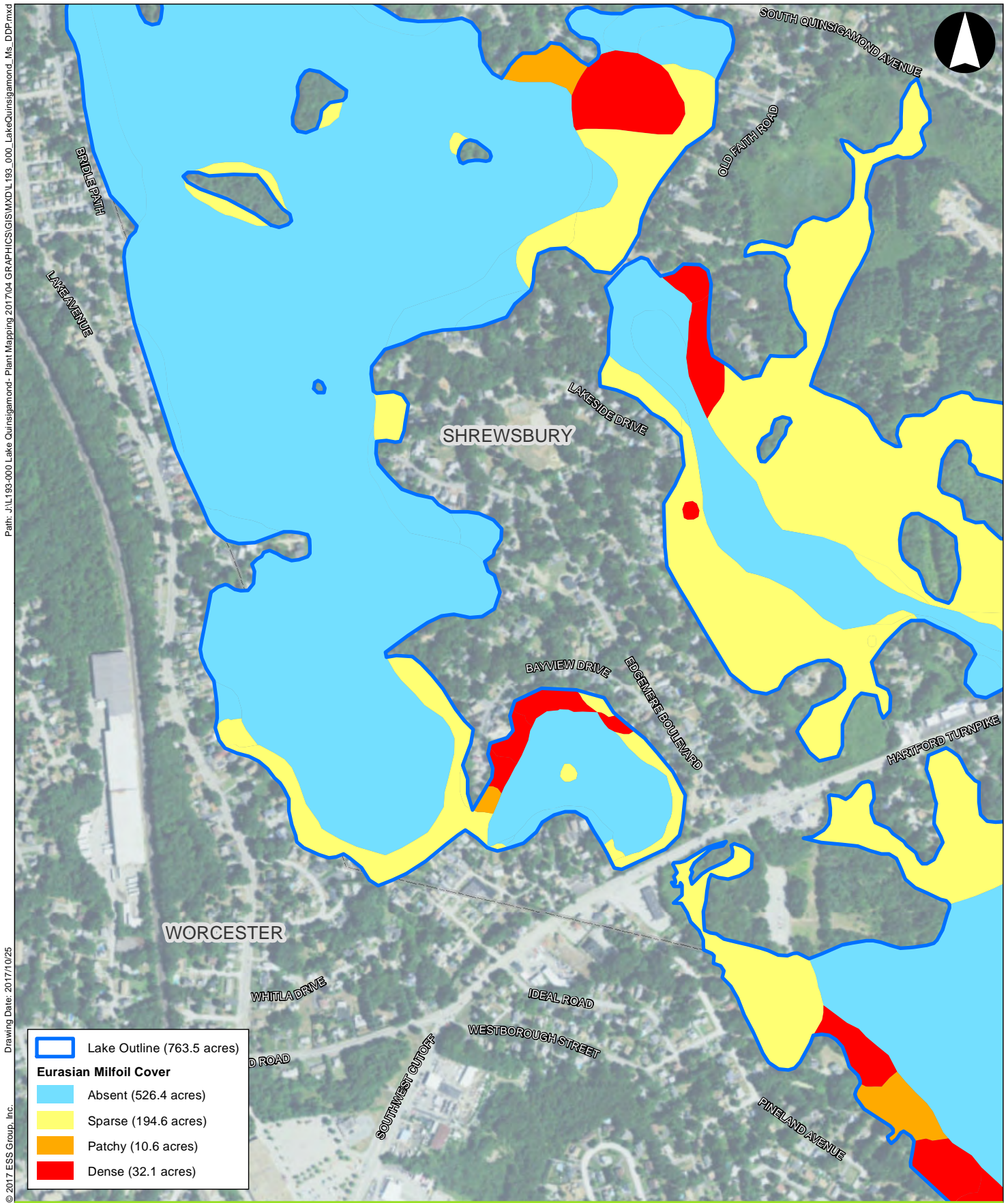
Lake Quinsigamond
 Worcester/Shrewsbury, Massachusetts

1 inch = 700 feet
 Source: 1) ESRI, World Imagery, 2017
 2) ESS, Field Survey, October 2017



Eurasian Milfoil Cover
 October 6 - 11, 2017

Figure 3
 Page 3 of 5



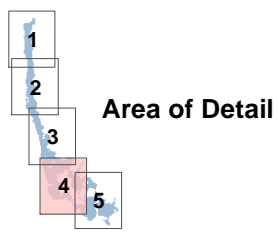
Path: J:\183-000 Lake Quinsigamond- Plant Mapping 2017\04 GRAPHICS\GIS\MXD\L183_000_LakeQuinsigamond.ms_DDP.mxd
 Drawing Date: 2017/10/25
 © 2017 ESS Group, Inc.

	Lake Outline (763.5 acres)
Eurasian Milfoil Cover	
	Absent (526.4 acres)
	Sparse (194.6 acres)
	Patchy (10.6 acres)
	Dense (32.1 acres)



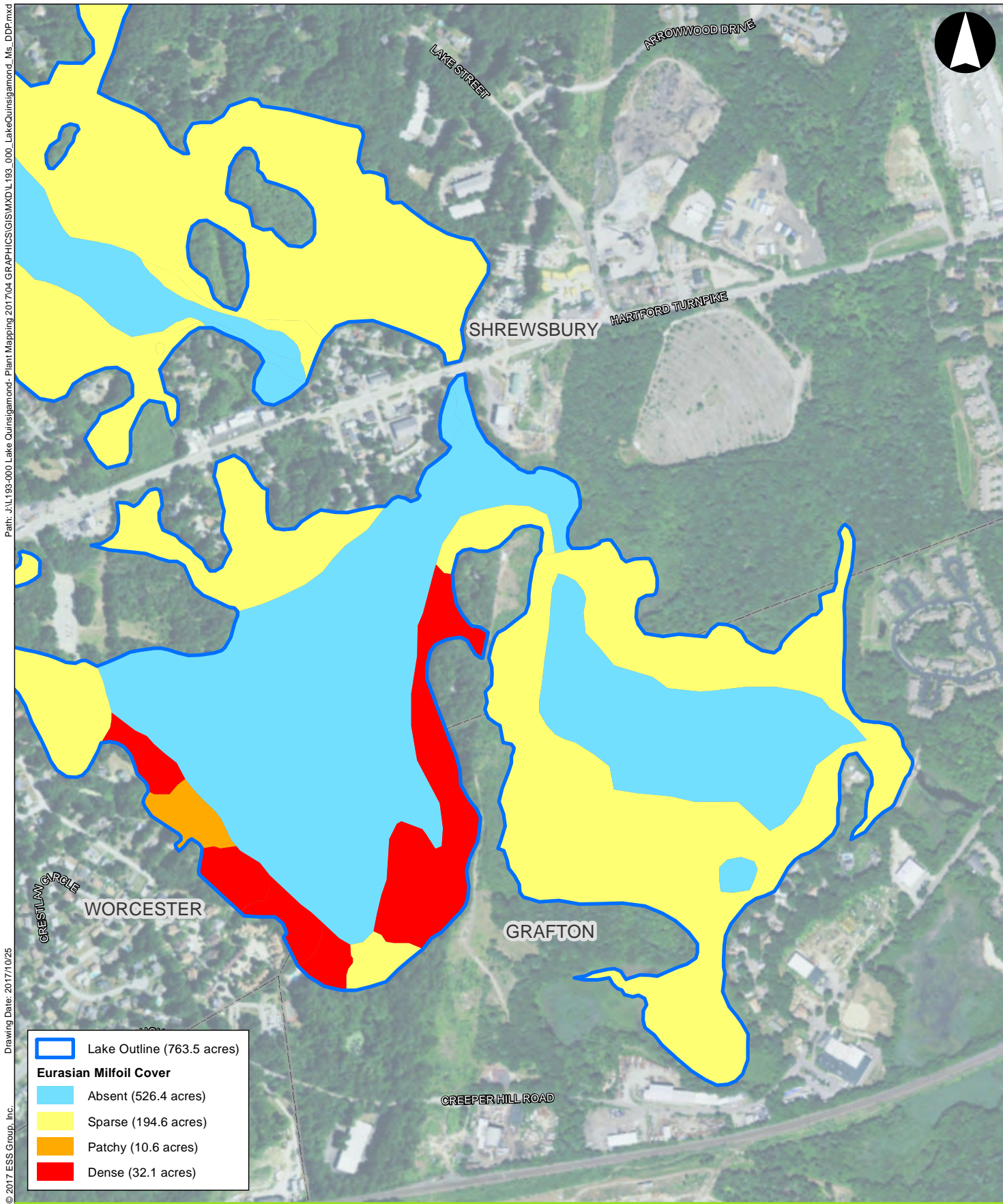
Lake Quinsigamond
 Worcester/Shrewsbury, Massachusetts

1 inch = 700 feet
 Source: 1) ESRI, World Imagery, 2017
 2) ESS, Field Survey, October 2017



Eurasian Milfoil Cover
 October 6 - 11, 2017

Figure 3
 Page 4 of 5



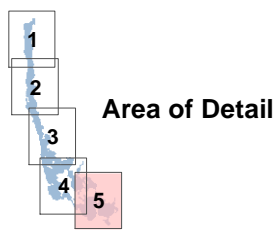
Path: J:\193-000 Lake Quinsigamond- Plant Mapping 2017\04 GRAPHICS\GIS\MXD\193_000_LakeQuinsigamond.ms_DDP.mxd
 Drawing Date: 2017/10/25
 © 2017 ESS Group, Inc.

	Lake Outline (763.5 acres)
Eurasian Milfoil Cover	
	Absent (526.4 acres)
	Sparse (194.6 acres)
	Patchy (10.6 acres)
	Dense (32.1 acres)



Lake Quinsigamond
Worcester/Shrewsbury, Massachusetts

1 inch = 700 feet
 Source: 1) ESRI, World Imagery, 2017
 2) ESS, Field Survey, October 2017



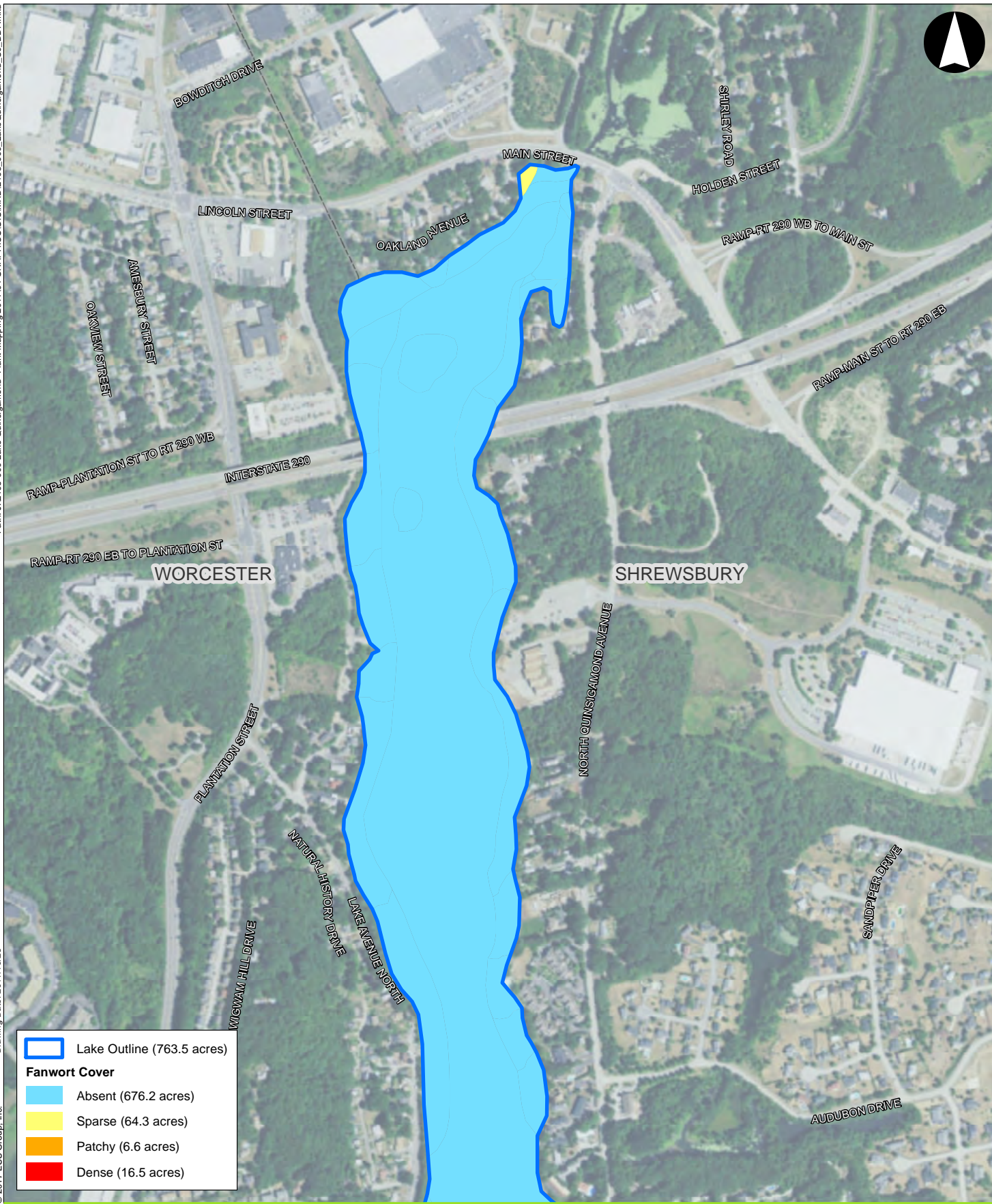
Eurasian Milfoil Cover
October 6 - 11, 2017

Figure 3
Page 5 of 5

Path: J:\193-000 Lake Quinsigamond- Plant Mapping 2017\04 GRAPHICS\GIS\IMXD\193_000_LakeQuinsigamond_Co...DDP.mxd

Drawing Date: 2017/10/25

© 2017 ESS Group, Inc.

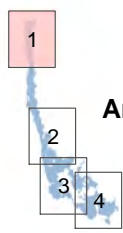


	Lake Outline (763.5 acres)
Fanwort Cover	
	Absent (676.2 acres)
	Sparse (64.3 acres)
	Patchy (6.6 acres)
	Dense (16.5 acres)



Lake Quinsigamond
Worcester/Shrewsbury, Massachusetts

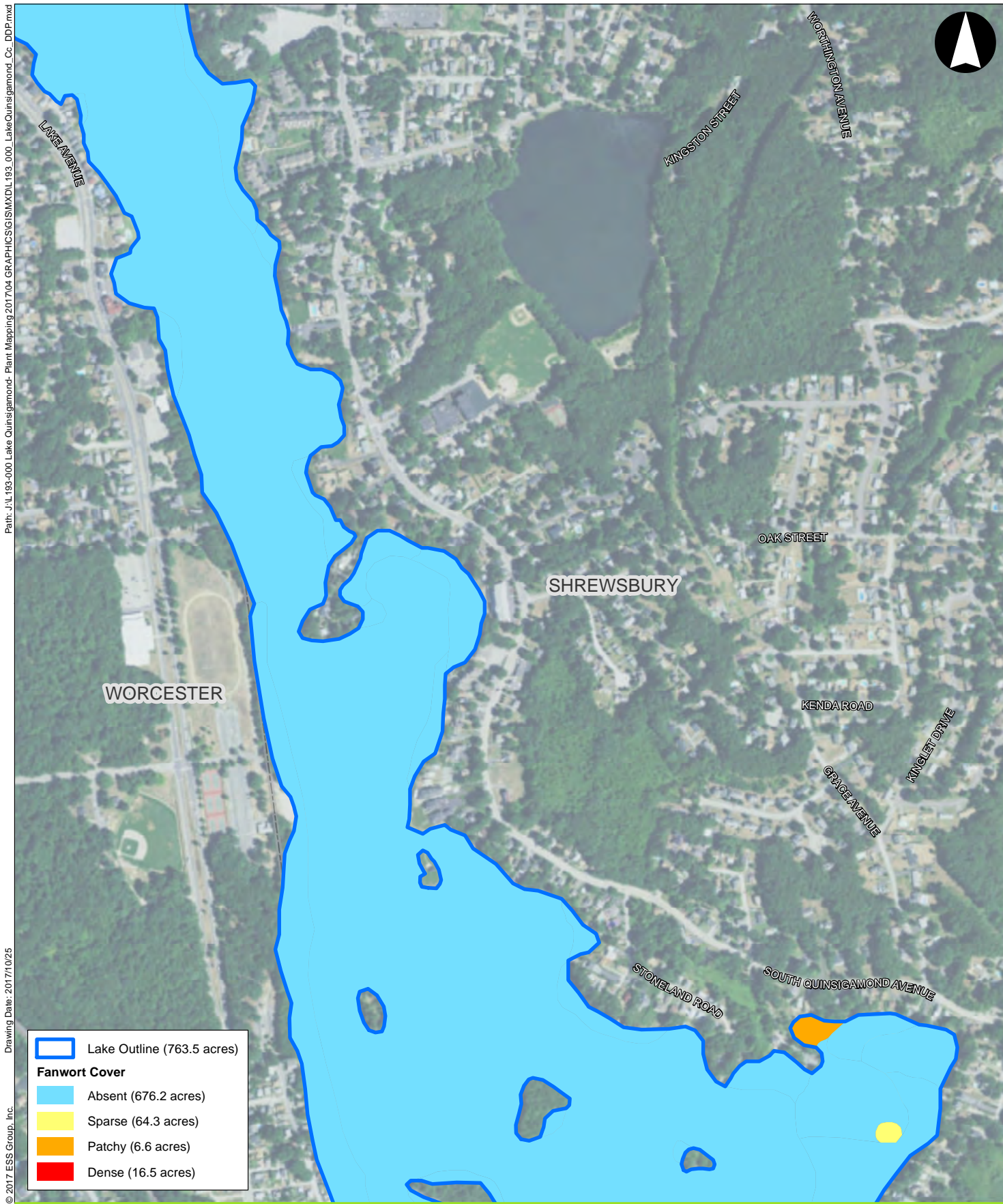
1 inch = 700 feet
Source: 1) ESRI, World Imagery, 2017
2) ESS, Field Survey, October 2017



Area of Detail

Fanwort Cover
October 6 - 11, 2017

Figure 4
Page 1 of 4



Path: J:\193-000 Lake Quinsigamond- Plant Mapping 2017\04 GRAPHICS\GIS\MXDL193_000_LakeQuinsigamond_Cc_DDF.mxd

Drawing Date: 2017/10/25

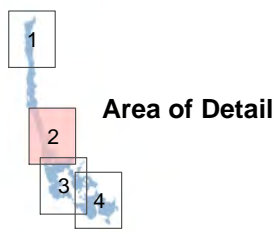
© 2017 ESS Group, Inc.

	Lake Outline (763.5 acres)
Fanwort Cover	
	Absent (676.2 acres)
	Sparse (64.3 acres)
	Patchy (6.6 acres)
	Dense (16.5 acres)

0 350 700 Feet

Lake Quinsigamond
Worcester/Shrewsbury, Massachusetts

1 inch = 700 feet
Source: 1) ESRI, World Imagery, 2017
2) ESS, Field Survey, October 2017



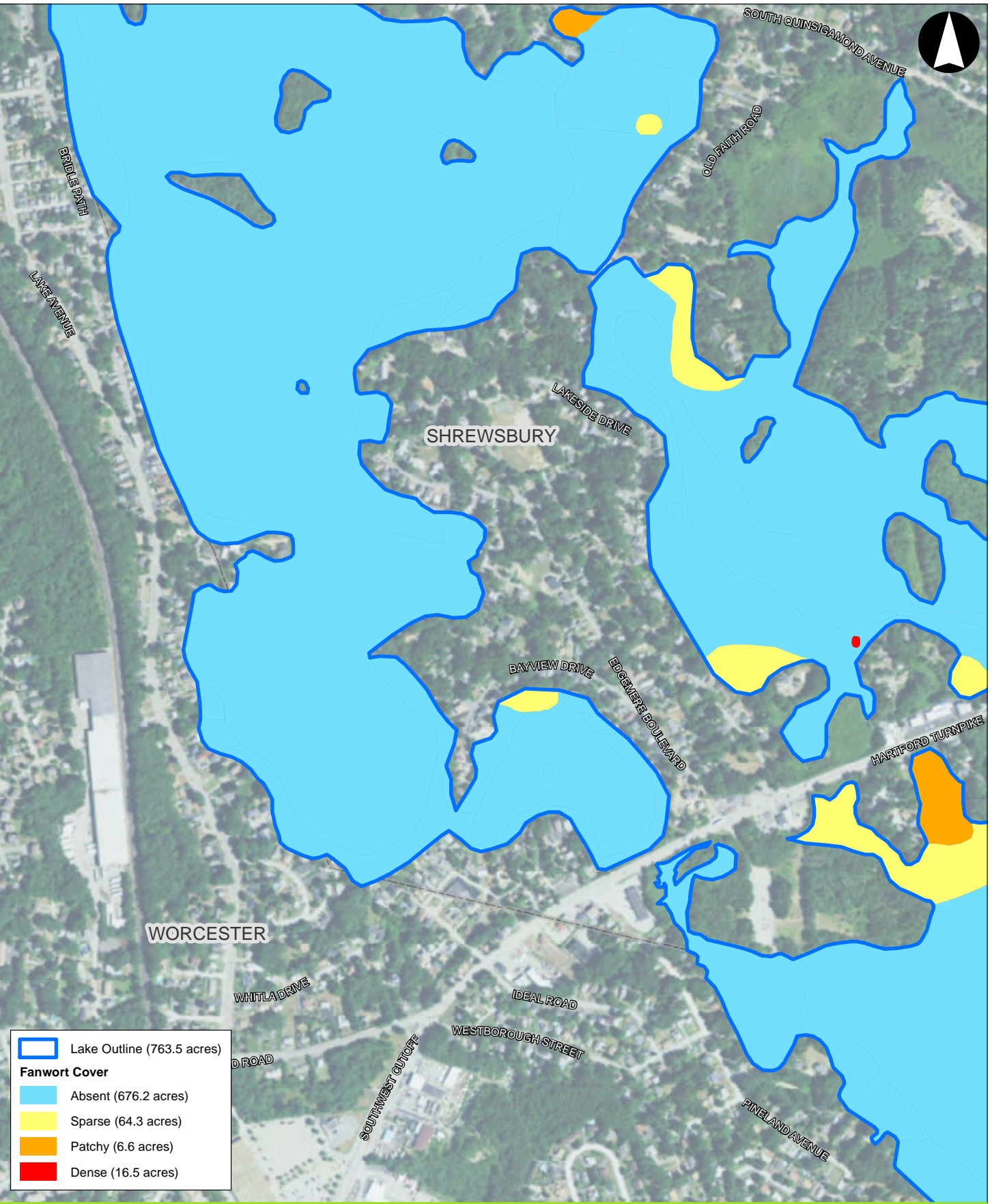
Fanwort Cover
October 6 - 11, 2017






Figure 4
Page 2 of 4

Path: J:\193-000 Lake Quinsigamond- Plant Mapping 2017\04 GRAPHICS\GIS\MXDL193_000_LakeQuinsigamond_Co...DDP.mxd

Drawing Date: 2017/10/25

© 2017 ESS Group, Inc.

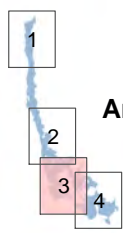


	Lake Outline (763.5 acres)
Fanwort Cover	
	Absent (676.2 acres)
	Sparse (64.3 acres)
	Patchy (6.6 acres)
	Dense (16.5 acres)



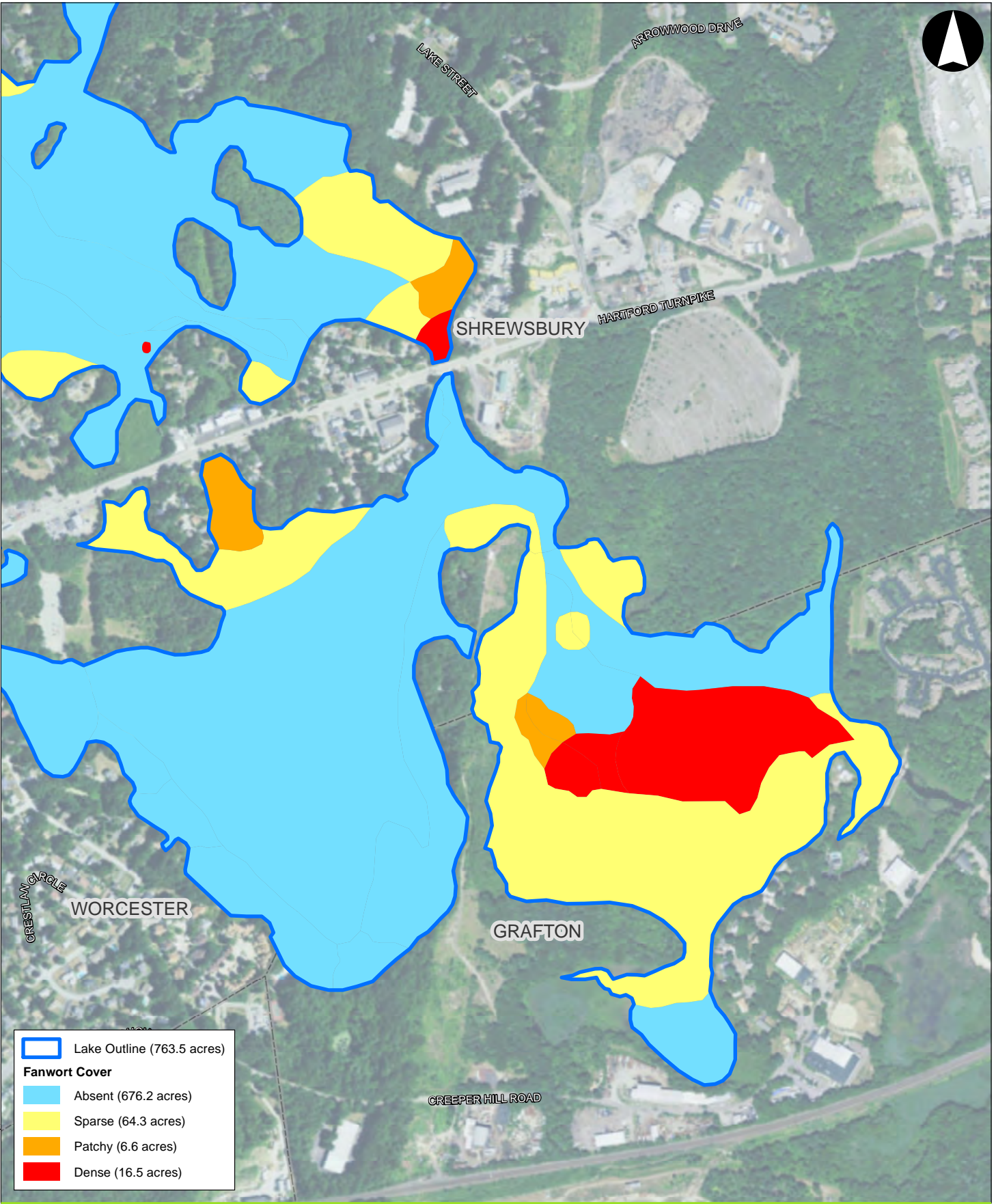
Lake Quinsigamond
Worcester/Shrewsbury, Massachusetts

1 inch = 700 feet
Source: 1) ESRI, World Imagery, 2017
2) ESS, Field Survey, October 2017



Fanwort Cover
October 6 - 11, 2017

Figure 4
Page 3 of 4

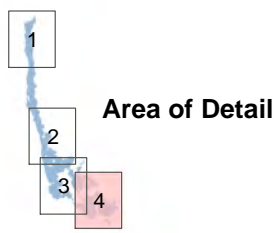


	Lake Outline (763.5 acres)
Fanwort Cover	
	Absent (676.2 acres)
	Sparse (64.3 acres)
	Patchy (6.6 acres)
	Dense (16.5 acres)

0 350 700 Feet

Lake Quinsigamond
Worcester/Shrewsbury, Massachusetts

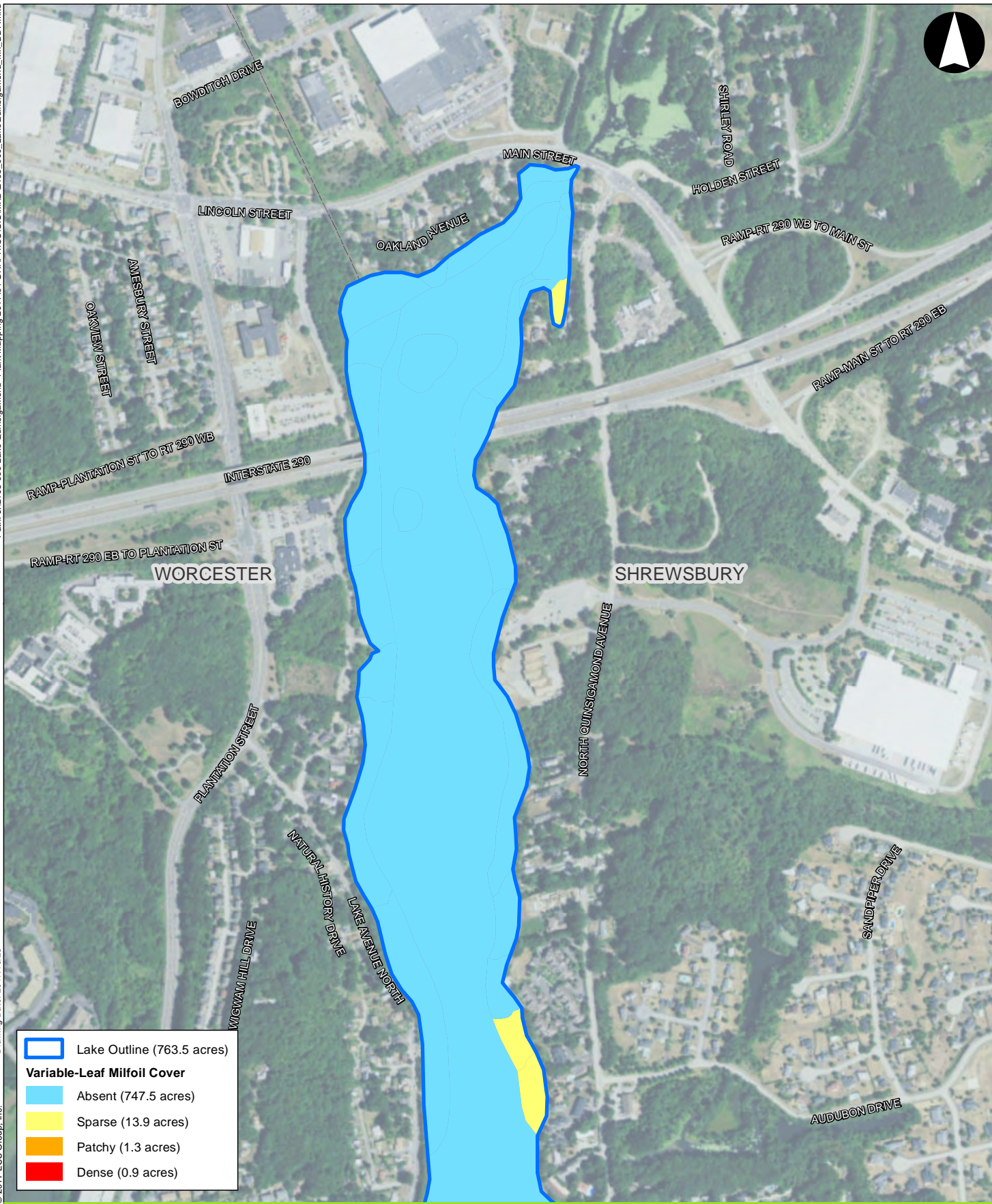
1 inch = 700 feet
Source: 1) ESRI, World Imagery, 2017
2) ESS, Field Survey, October 2017



Fanwort Cover
October 6 - 11, 2017

Figure 4
Page 4 of 4

Path: J:\183-000 Lake Quinsigamond- Plant Mapping 2017\04 GRAPHICS\GIS\MXD\183_000_LakeQuinsigamond_Mh_DDP.mxd
 Drawing Date: 2017/10/25
 © 2017 ESS Group, Inc.



	Lake Outline (763.5 acres)
Variable-Leaf Milfoil Cover	
	Absent (747.5 acres)
	Sparse (13.9 acres)
	Patchy (1.3 acres)
	Dense (0.9 acres)

0 350 700 Feet

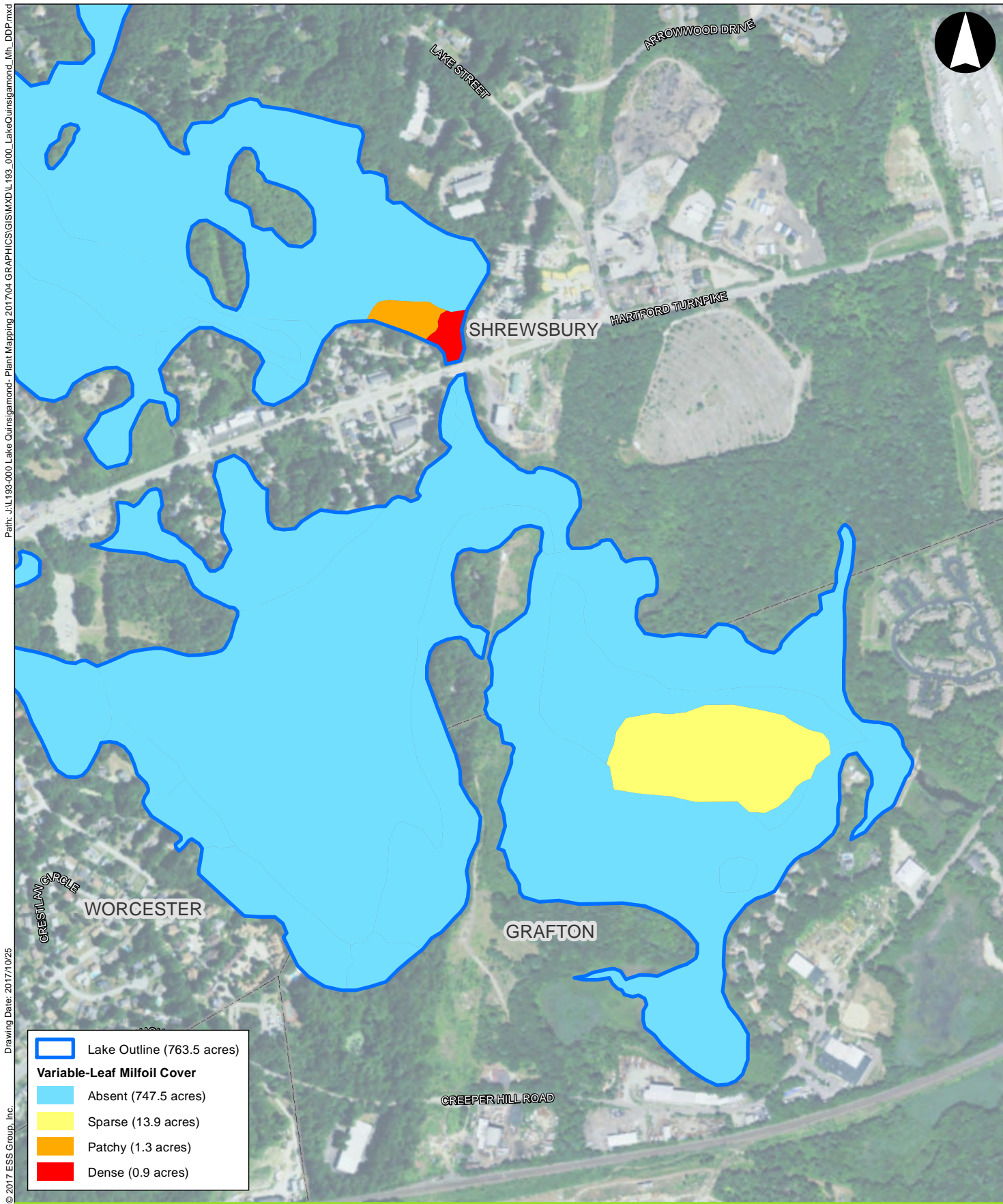
Lake Quinsigamond
 Worcester/Shrewsbury, Massachusetts

1 inch = 700 feet
 Source: 1) ESRI, World Imagery, 2017
 2) ESS, Field Survey, October 2017



Area of Detail

Variable-Leaf Milfoil Cover
 October 6 - 11, 2017



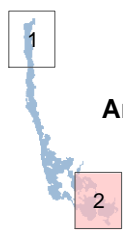
Path: J:\L193-000 Lake Quinsigamond- Plant Mapping 2017\04 GRAPHICS\GIS\MXD\L193_000_LakeQuinsigamond_Mh_DDF.mxd
 Drawing Date: 2017/10/25
 © 2017 ESS Group, Inc.

	Lake Outline (763.5 acres)
Variable-Leaf Milfoil Cover	
	Absent (747.5 acres)
	Sparse (13.9 acres)
	Patchy (1.3 acres)
	Dense (0.9 acres)



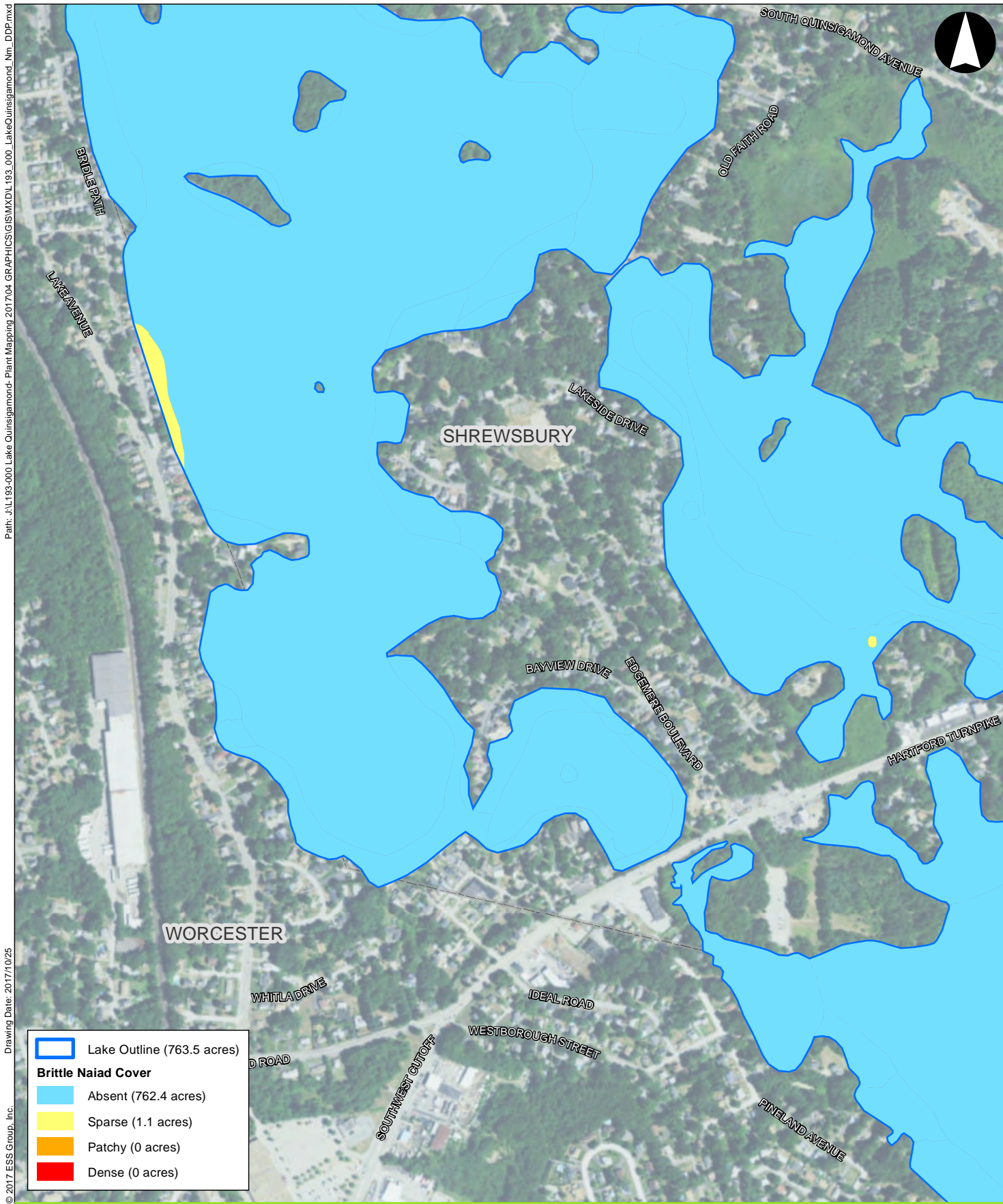
Lake Quinsigamond
 Worcester/Shrewsbury, Massachusetts

1 inch = 700 feet
 Source: 1) ESRI, World Imagery, 2017
 2) ESS, Field Survey, October 2017



Area of Detail

Variable-Leaf Milfoil Cover
 October 6 - 11, 2017



Path: J:\1183-000 Lake Quinsigamond- Plant Mapping_2017\04 GRAPHICS\GIS\MXD\183_000_LakeQuinsigamond_Nm_DDF.mxd
 Drawing Date: 2017/10/25
 © 2017 ESS Group, Inc.



	Lake Outline (763.5 acres)
Brittle Naiad Cover	
	Absent (762.4 acres)
	Sparse (1.1 acres)
	Patchy (0 acres)
	Dense (0 acres)



Lake Quinsigamond
Worcester/Shrewsbury, Massachusetts

1 inch = 700 feet
 Source: 1) ESRI, World Imagery, 2017
 2) ESS, Field Survey, October 2017



Area of Detail

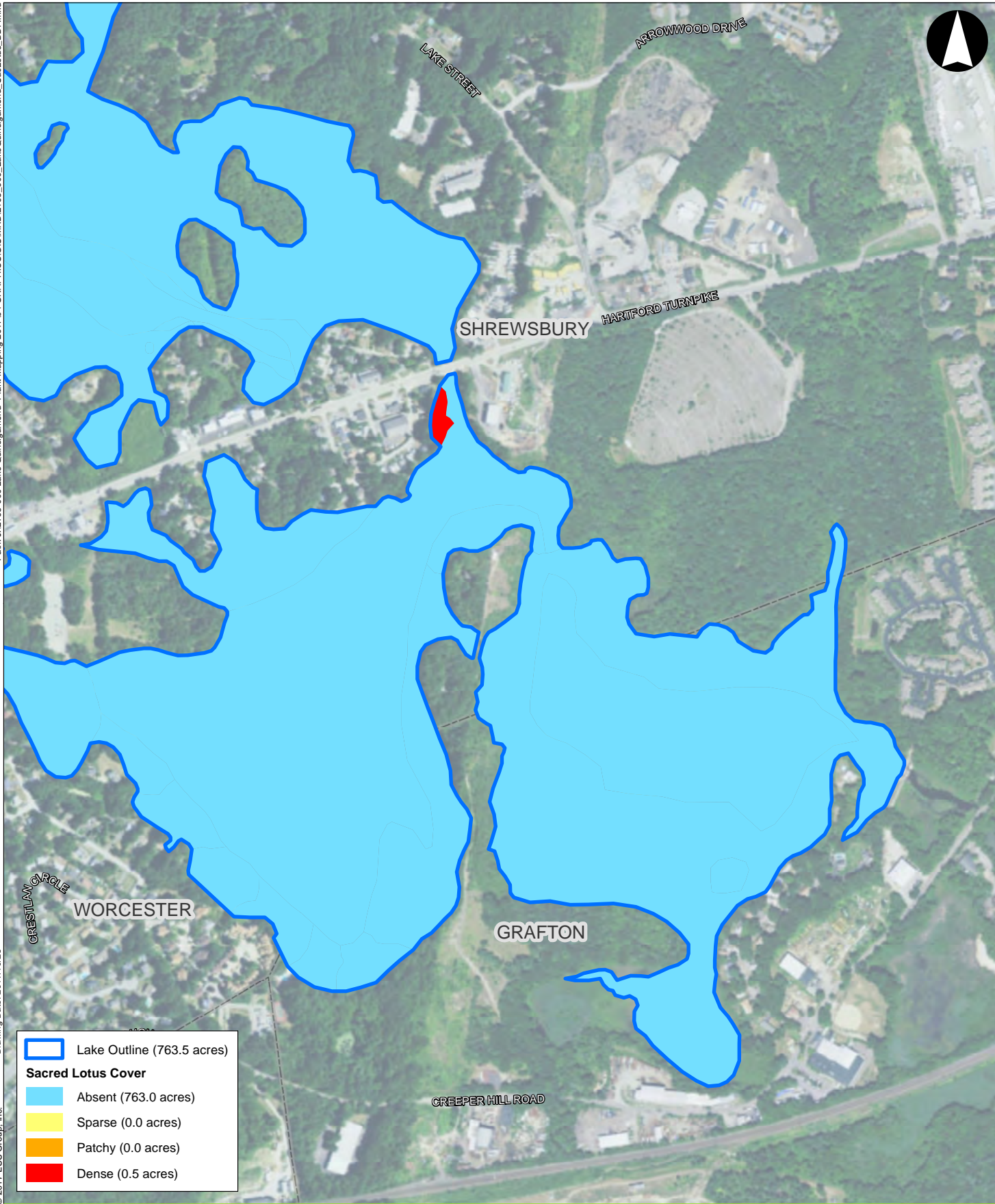
Brittle Naiad Cover
October 6 - 11, 2017

Figure 6

Path: J:\1193-000 Lake Quinsigamond- Plant Mapping 2017\04 GRAPHIC\GIS\MXD\1193_000_LakeQuinsigamond_SacLotus_DDP.mxd

Drawing Date: 2017/10/25

© 2017 ESS Group, Inc.



	Lake Outline (763.5 acres)
Sacred Lotus Cover	
	Absent (763.0 acres)
	Sparse (0.0 acres)
	Patchy (0.0 acres)
	Dense (0.5 acres)

0 350 700 Feet

Lake Quinsigamond
Worcester/Shrewsbury, Massachusetts

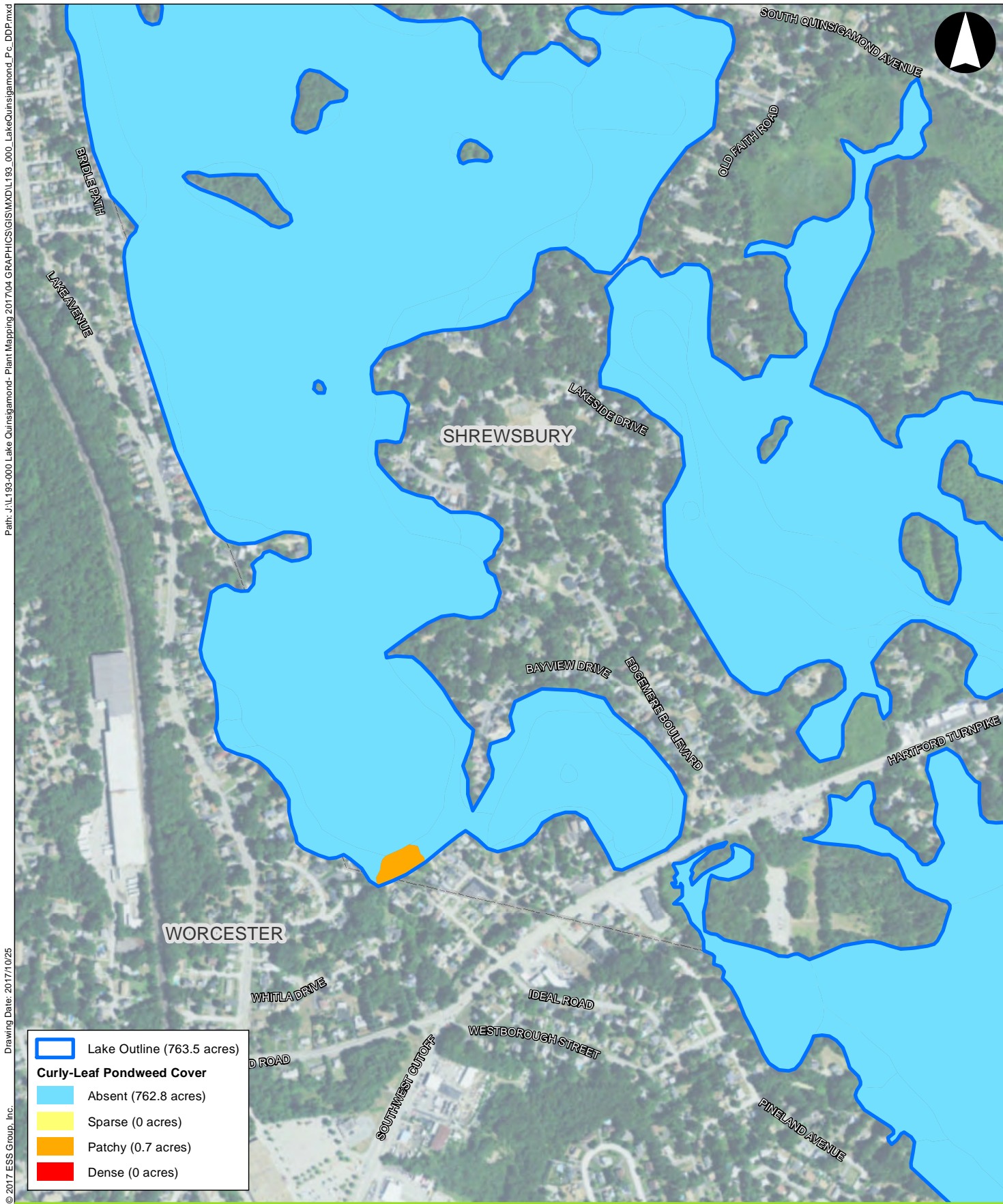
1 inch = 700 feet
Source: 1) ESRI, World Imagery, 2017
2) ESS, Field Survey, October 2017

Sacred Lotus Cover
October 6 - 11, 2017








Area of Detail

Figure 7



Path: J:\193-000 Lake Quinsigamond- Plant Mapping 2017\04 GRAPHICS\GIS\MXD\L193_000_LakeQuinsigamond_Pc_DDF.mxd
 Drawing Date: 2017/10/25
 © 2017 ESS Group, Inc.

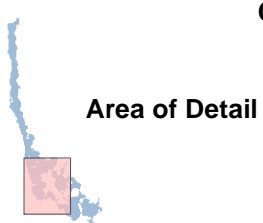
	Lake Outline (763.5 acres)
Curly-Leaf Pondweed Cover	
	Absent (762.8 acres)
	Sparse (0 acres)
	Patchy (0.7 acres)
	Dense (0 acres)



0 350 700
Feet

Lake Quinsigamond
Worcester/Shrewsbury, Massachusetts

1 inch = 700 feet
 Source: 1) ESRI, World Imagery, 2017
 2) ESS, Field Survey, October 2017



Curly-Leaf Pondweed Cover
October 6 - 11, 2017

Figure 8